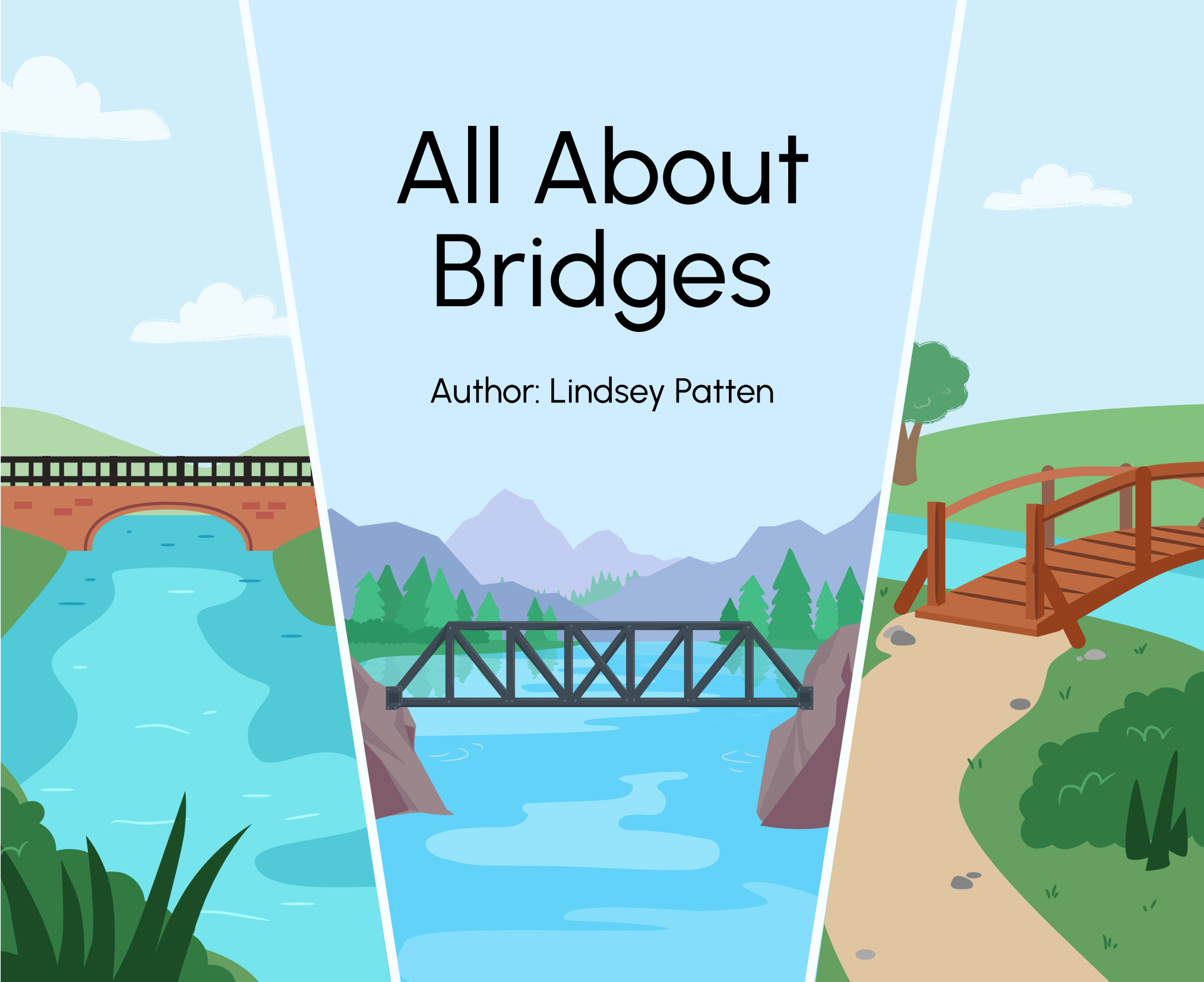
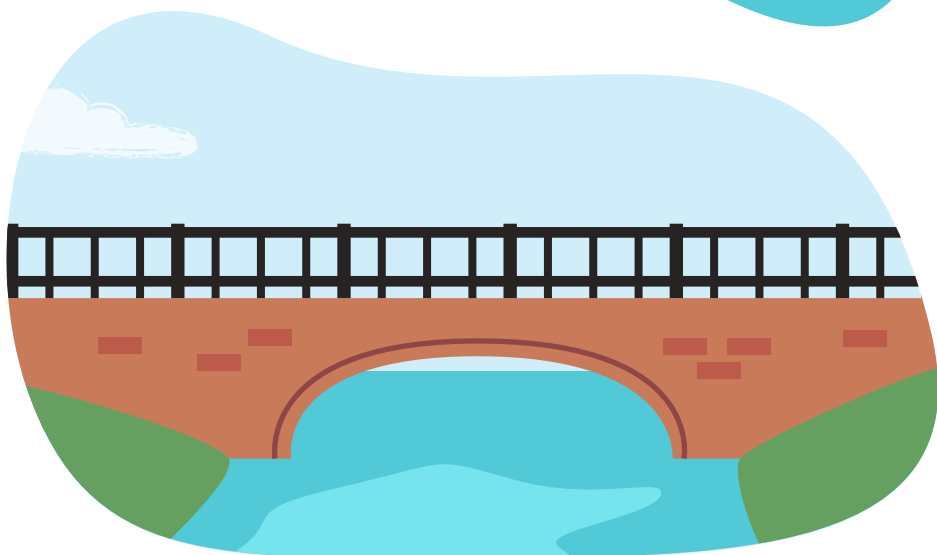
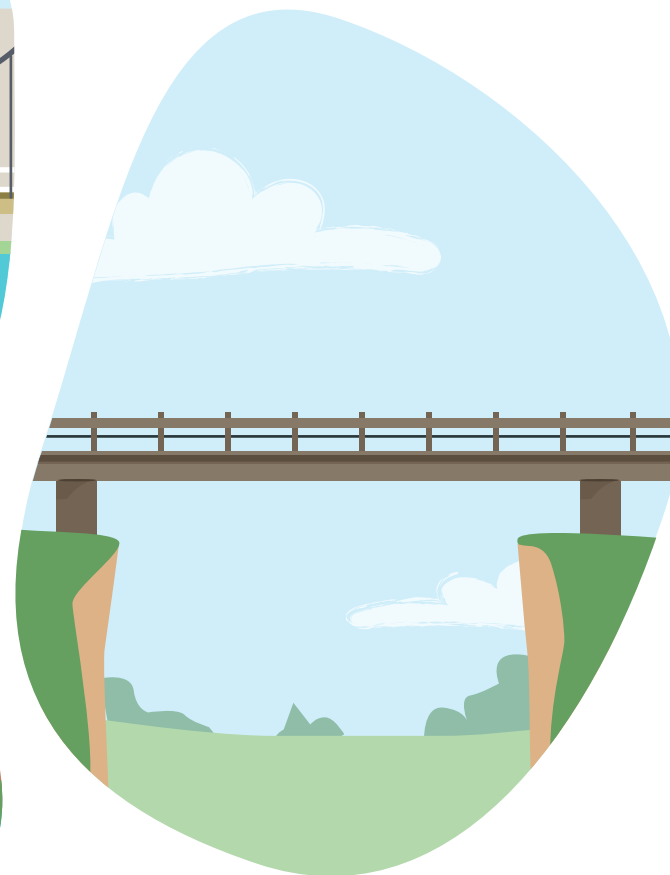
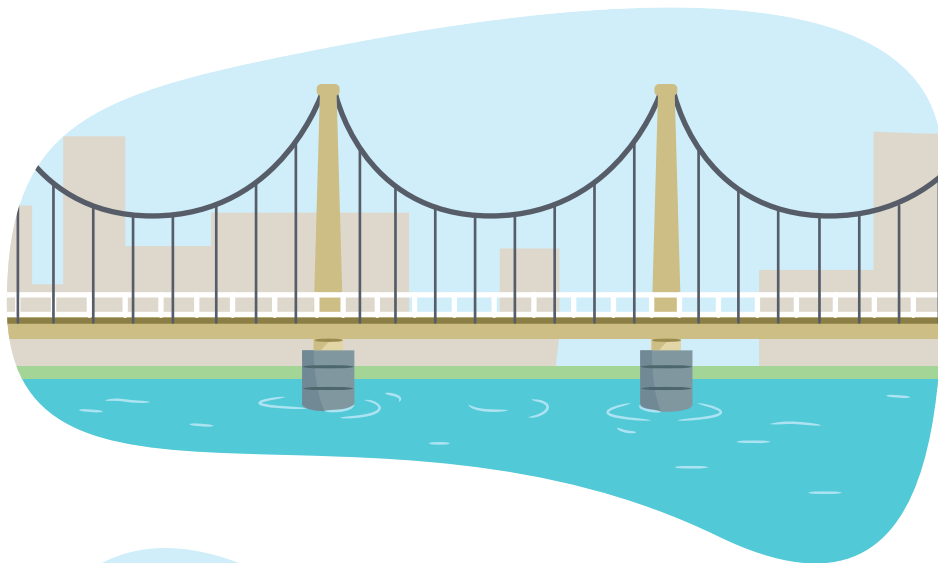


# All About Bridges

Author: Lindsey Patten

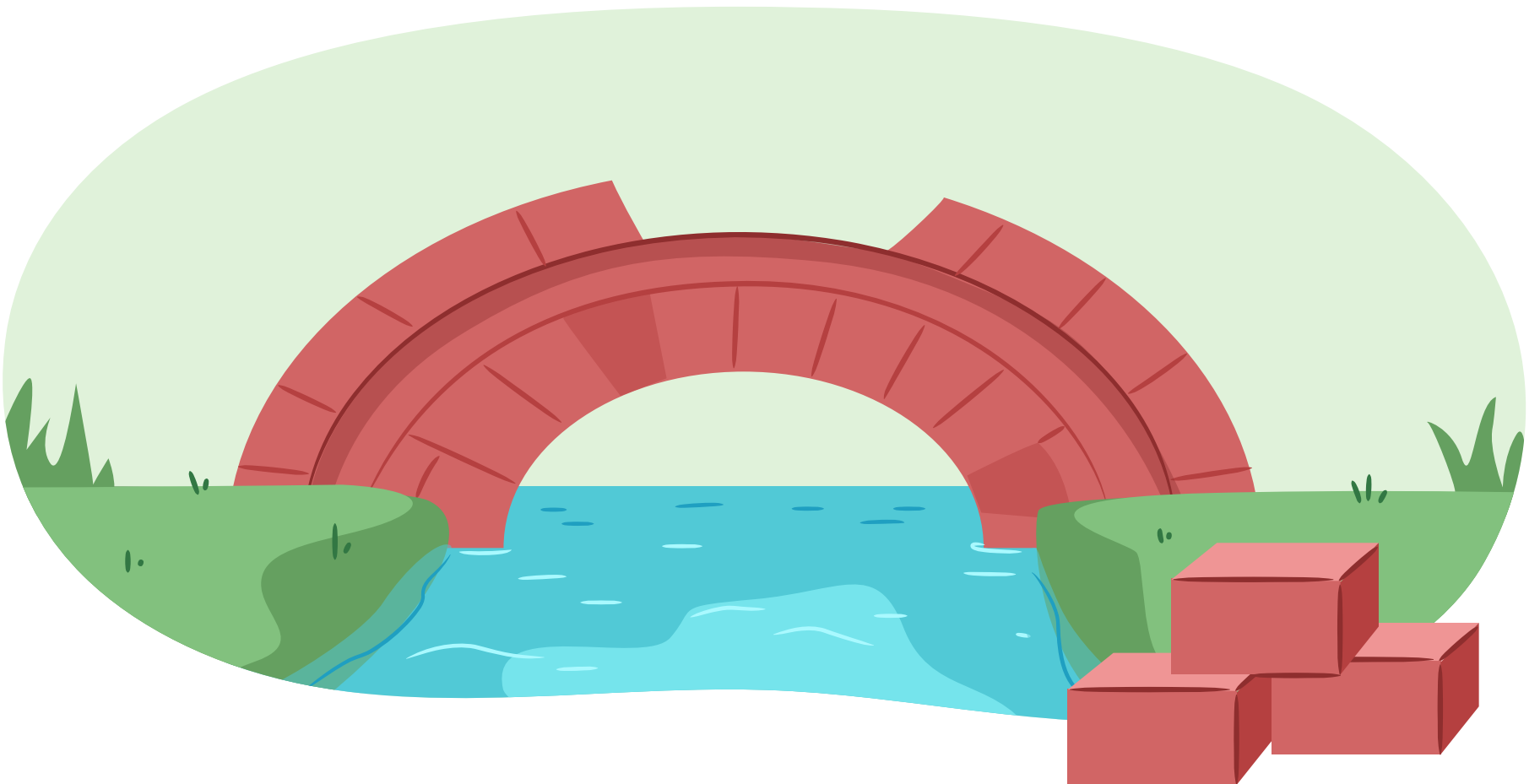




# All About Bridges

Author: Lindsey Patten

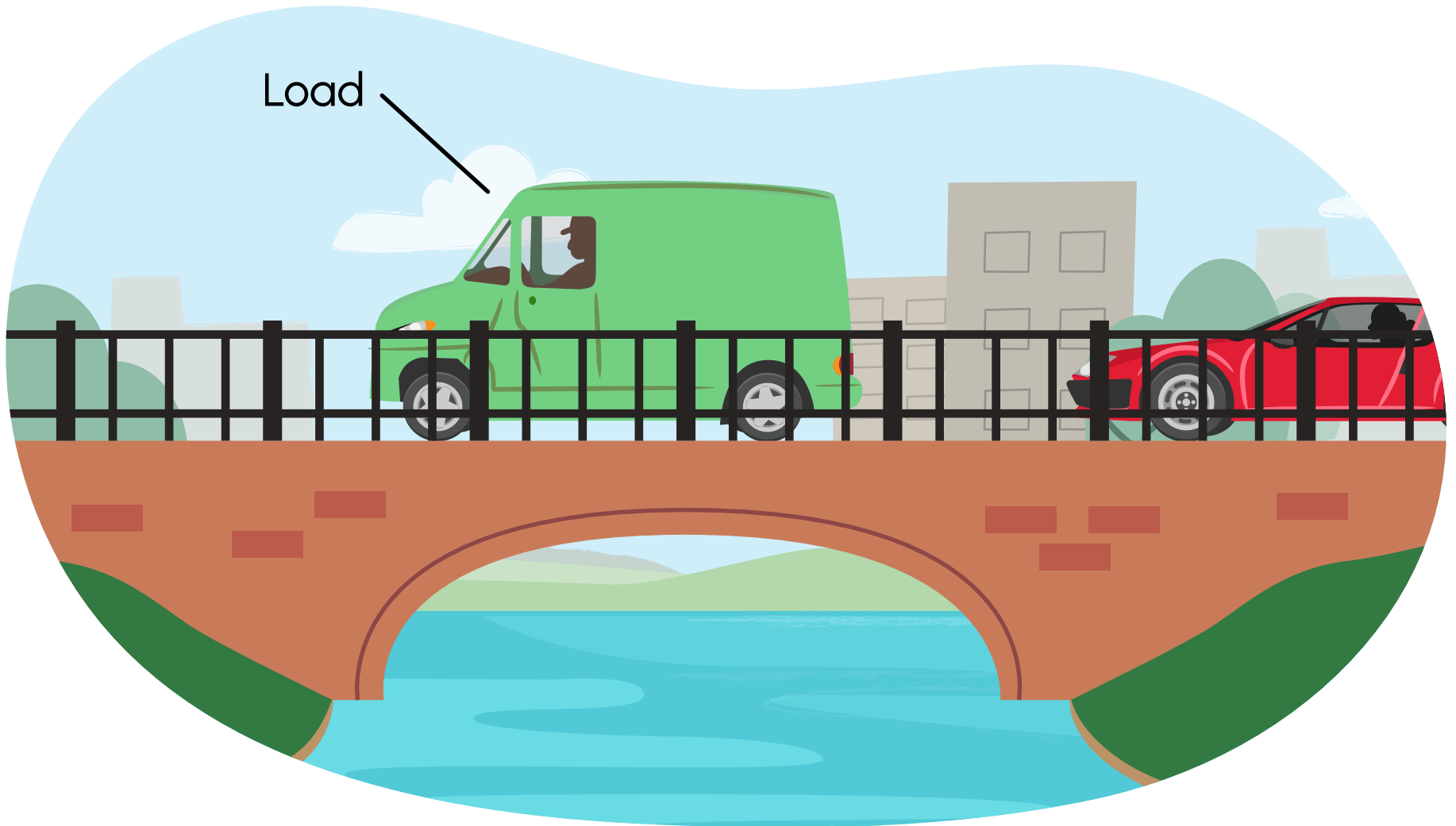
A bridge is an example of a structure. A structure is made of different parts that are put together. A structure can hold an item, a person, or an animal.

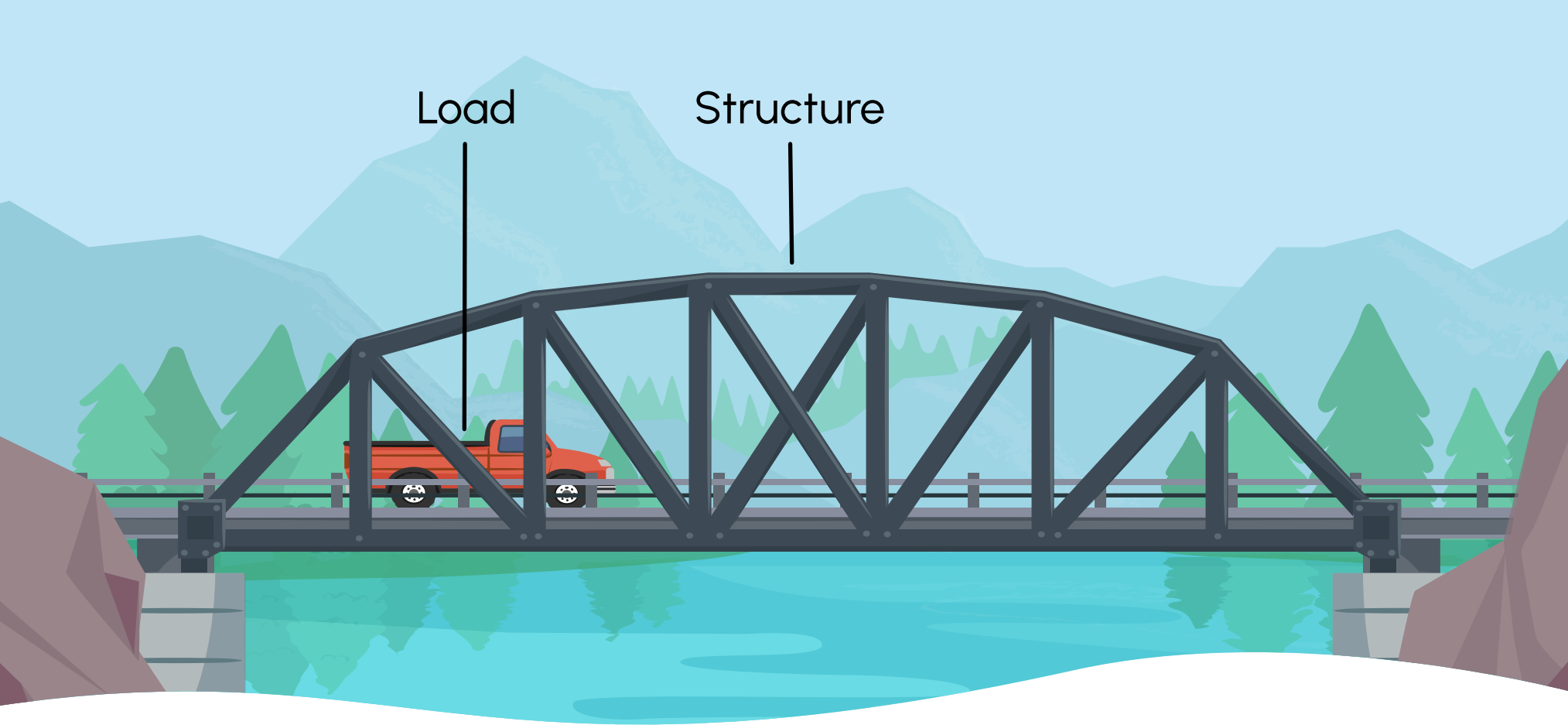


The purpose of a bridge is to carry things from one place to another.

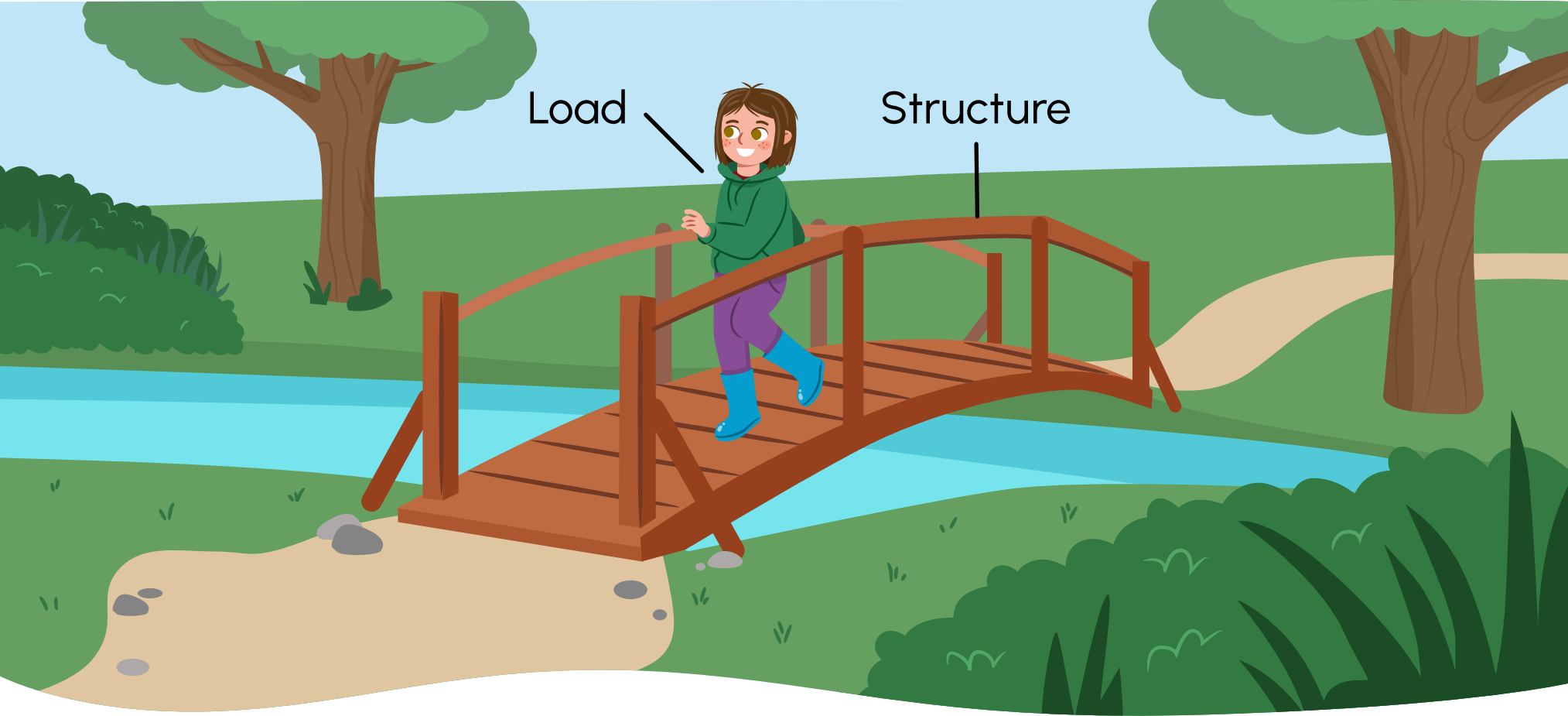


A bridge needs to be able to hold the things that are moving across it. We call these things loads.

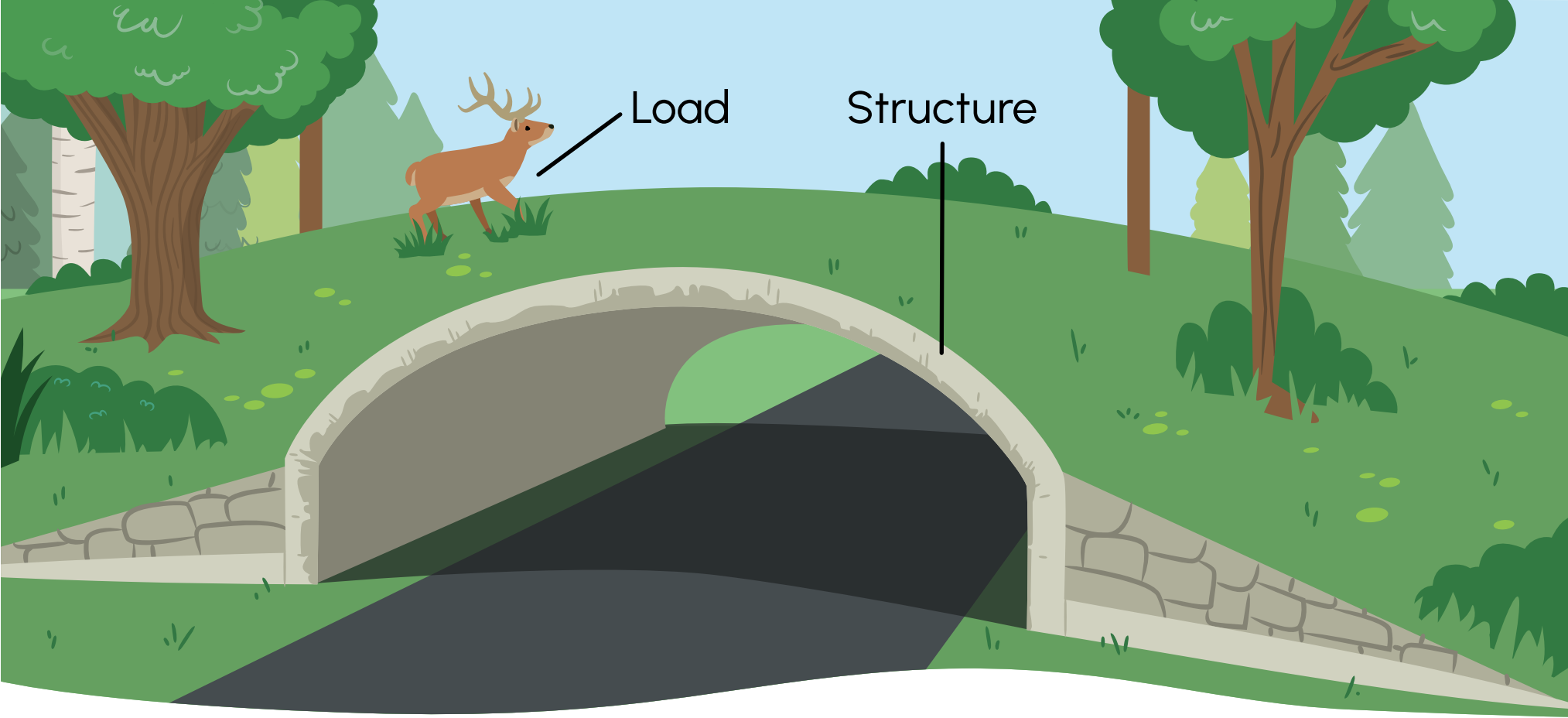




Some bridges are made for vehicles like cars, trains, trucks or buses. This bridge is made from metal. Metal can be used to hold up the cars because it is very strong.

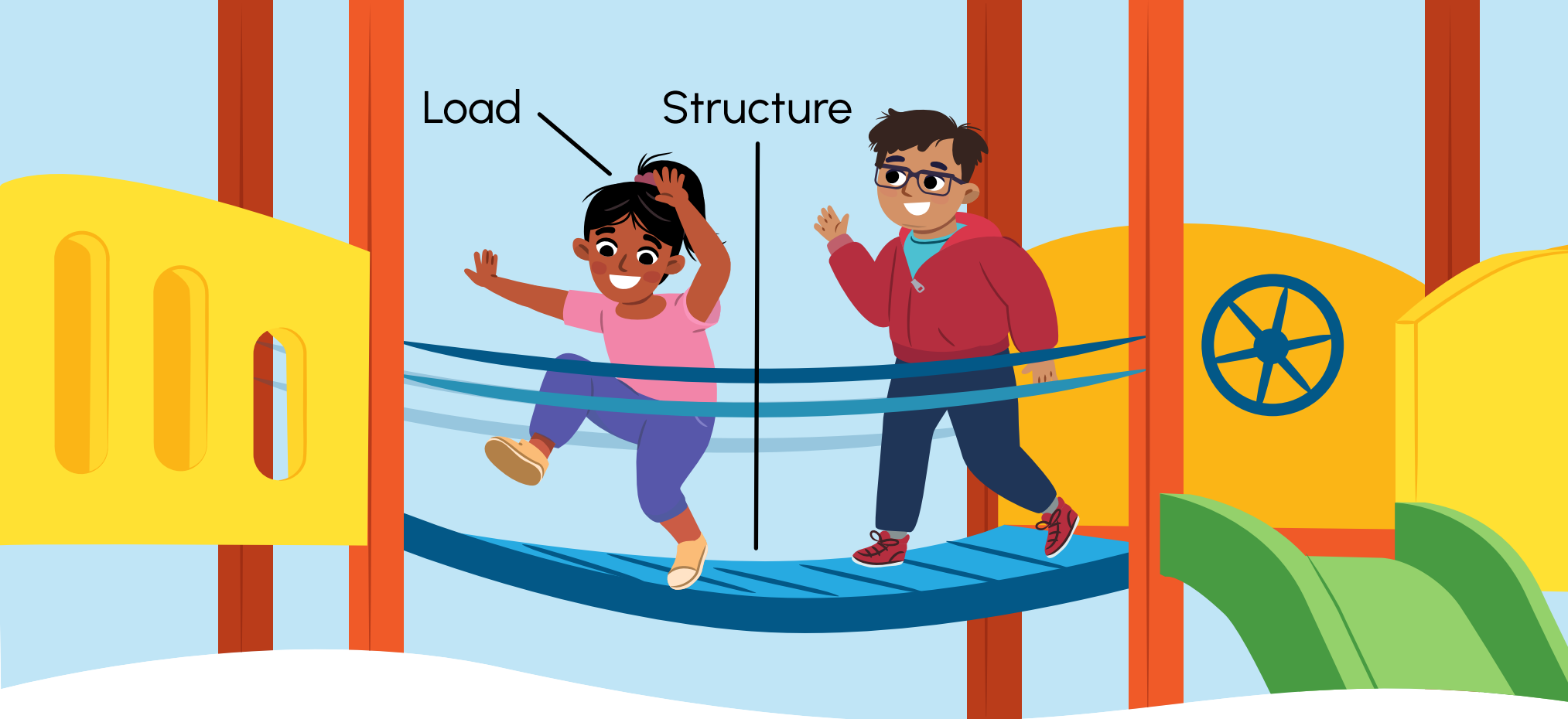


Some bridges are built for people to get across open spaces. This bridge is made from wood. Wood is also strong. It can hold children, but it might not be able to hold a car.



Some bridges are built for animals to get across open spaces. This bridge is made from concrete which is very strong. There is grass and plants on top of the concrete for the animals to walk across.





Some bridges are built for play. This bridge is made from plastic. It is strong enough for children to walk across but a car couldn't.

When building a bridge, you need to make sure that it is strong enough to stand and support the load going across it.



two